

TOP 10 REASONS

T O U P G R A D E T O

Pro/ENGINEER Wildfire 3.0



Pro|ENGINEER®

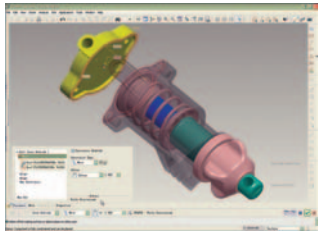
W I L D F I R E®

Work Faster, Work Smarter with Pro/ENGINEER® Wildfire® 3.0

T O P 1 0 R E A S O N S T O U P G R A D E

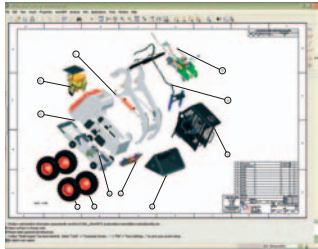
Simple, Powerful, and Connected, Pro/ENGINEER Wildfire 3.0 drives personal and process productivity, helping you and your team work faster and smarter. And while there are hundreds of reasons to move to Pro/ENGINEER Wildfire 3.0, here are **the top 10**:

1. Faster Assembly



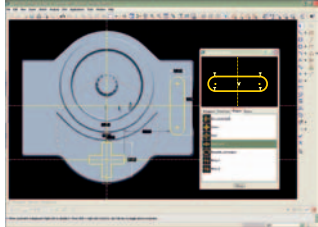
As your products become more sophisticated and more complex, you need tools that make it easier to build and modify your assemblies. Pro/ENGINEER Wildfire 3.0 features a familiar user interface that streamlines the assembly process, allowing you to assemble components up to 5 times faster. With new multi-threaded assembly retrieval and the added support of the Windows 64-bit OS, you can not only get information into Pro/ENGINEER faster, but you can work with more information in your Pro/ENGINEER sessions.

2. Faster Drawings



Traditional 2D drawings remain a critical deliverable in product development. Now, these deliverables are even richer with the addition of shaded views. Shaded views remove ambiguity, helping you clarify design concepts faster. In addition, Pro/ENGINEER Wildfire 3.0 speeds up drawing creation by automating many tedious drawing tasks such as flipping arrows, aligning dimensions, and scaling drawing views, so you can create production drawings up to 60% faster than with earlier Pro/ENGINEER releases.

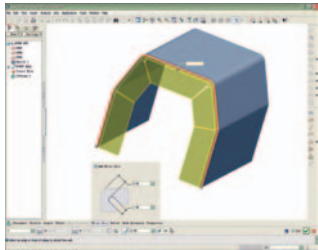
3. Faster Sketches



The sketching workflow has been redesigned with fewer menu picks, so it's much easier to set up the sketch, and much quicker to exit the sketching environment. This productivity improvement reduces the overall time to create and modify features.

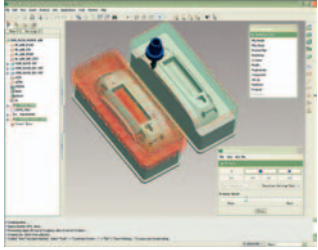
With the new sketcher palette, you can access and re-use common sections much faster. You simply select the saved section and place it within your sketch, thus improving the overall creation of standard sections by 55%. You will also see up to 80% faster performance when modifying large, complex sketches.

4. Faster Sheetmetal

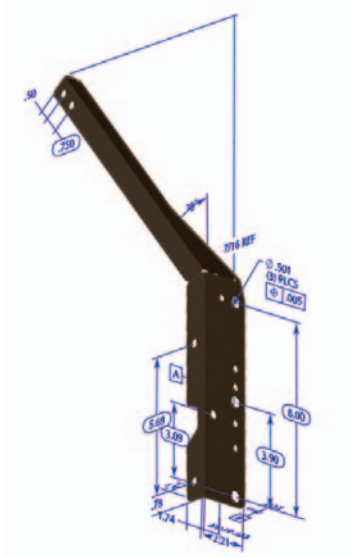


The modern, more consistent user interface makes it easier to create and modify sheetmetal parts. Sheetmetal features in Pro/ENGINEER now 'understand' your design intent, and automatically incorporate necessary geometry to help you quickly create your designs. For example, when creating multiple walls in a single feature, Pro/ENGINEER automatically includes a miter cut, to avoid overlapping geometry. With these improvements, you can create sheetmetal features up to 90% faster, and reduce the total number of features by up to 90%.

5. Faster CAM



We've updated the manufacturing user interface so it's now more intuitive and consistent with the rest of Pro/ENGINEER. Also, a new, modern and familiar user interface for the tool manager makes it easier and faster to find the right tool for the job. These productivity enhancements will allow you to create manufacturing geometry up to 3 times faster.



6. Smarter Models

By leveraging the intelligence built into 3D models, you can reduce many downstream deliverables to improve quality and reduce cycle time. For instance, replacing traditional 2D drawings with 3D drawings will save you time. Also, 3D drawings make it easier to visualize the final product, which eliminates errors from misinterpretations. Pro/ENGINEER Wildfire 3.0 delivers even more capabilities to generate 3D drawings. Plus, you can embed manufacturing process information into the 3D design model, promoting preferred manufacturing processes and facilitating design for manufacturability.

Using our new AssemblySense™ technology, you can now embed rules and logic into assembly instructions. For example, you can specify that only bolts with a 1/4-20 thread be assembled into a specific hole having a 1/4-20 thread. Or, you can specify that a bearing's inner surface have a certain finish in order to be assembled onto a shaft. This technology ensures that your designs not only fit together, but they also function properly.

7. Smarter Sharing

Many companies today need to share design information with partners and suppliers, but don't want third party companies accessing their internal database. As a result, models must be downloaded outside of the database, and changes must be reconciled later, manually.

With our new portable workspaces, it's now easy to share design data stored in Pro/INTRALINK® or Windchill® and its associated metadata. Partners or suppliers can work in a secure, portable workspace, where all changes are tracked. It's easy to then assimilate the changes back into the database. This capability is useful when working offsite on a laptop, as you can easily incorporate changes back into the database later.

8. Smart Process Wizard for Mechanics

Today, FEA specialists are scarce, and typically, design engineers aren't performing FEA often enough to become skilled with the process. Consequently, design engineers must either follow an inefficient process or wait for the help of an FEA specialist. And, as the FEA-experienced workforce approaches retirement, companies are losing acquired knowledge of best practices.

Pro/ENGINEER Wildfire 3.0 delivers a new, customizable Process Wizard that captures best practices and recommends approaches for various processes, and exposes those practices to your broader user base. The Process Wizard steers engineers through the analysis process, improving efficiency and making it possible to validate designs earlier and more frequently.

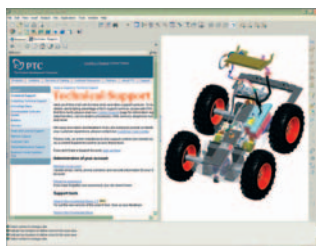
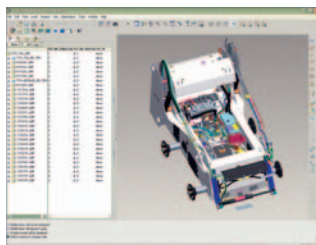
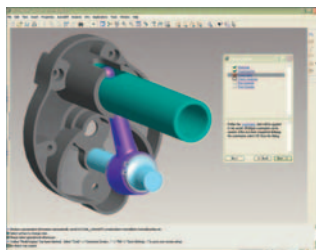
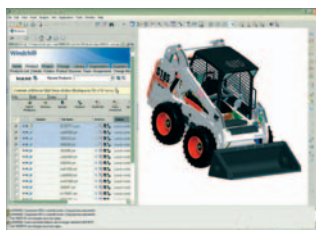
9. Smarter Interoperability

Today's engineers need seamless and timely access to product development information.

With Pro/ENGINEER Wildfire 3.0, you can benefit from several improvements to the interoperability between Pro/ENGINEER and Pro/INTRALINK or Windchill. For example, bulk item reporting is automated. Downloaded data is automatically checked out when modified, so you only check out the data you need. Improvements to the Difference Report provide a more detailed change history. Lastly, a new column in the model tree conveniently reports the database status of any item.

10. Better Quality and Upgraded Service Levels

PTC continues to demonstrate its commitment to delivering high quality products. By tightening our release criteria, we will ensure this latest version will be our highest quality release ever. Active maintenance customers will be automatically upgraded to this high quality release and to PTC Gold Level Support. PTC Gold Level Support means 24 hour access to Technical Phone Support, five days a week, and to a "smart" Knowledge Database. Now, regardless of the time of day, help is only a mouse click or phone call away.



GET STARTED NOW!

PTC offers many resources that make it easy to upgrade to Pro/ENGINEER Wildfire 3.0:

- **The Pro/ENGINEER Wildfire 3.0 Landing Page** (launched when you open the software) includes a quick-reference menu-mapper that guides you through menu picks that have changed from previous releases. The landing page also contains numerous links to other helpful resources like online tutorials and interactive release notes with detailed information on the latest enhancements.
- **Pro/ENGINEER Wildfire 3.0 Interactive Tour** provides animated demonstrations of the latest enhancements.
- **A One-Day Update Training Course** is the fastest way to become familiar with the new features in Pro/ENGINEER Wildfire 3.0. By attending a live, on-site, instructor-led course, you benefit from the knowledge of an expert trainer.
- **Online Training Courses** are a convenient way to learn about the new capabilities at your own pace, at your own desk. More information on available training courses can be found on the PTC website.
- **PTC's Award-Winning Technical Support** is available 24 hours a day to assist with the installation of Pro/ENGINEER Wildfire 3.0, or to answer any questions on your upgrade.

Upgrade to Pro/ENGINEER Wildfire 3.0 today and start working faster and smarter right away!

For more information, please visit: www.PTC.com/go/top10



"Highly Recommended... Five Stars"

CADALYST Magazine

Pro/ENGINEER Wildfire

Readers' Choice Award

Desktop Engineering Magazine

Pro/ENGINEER Wildfire

"Editor's Choice"

CADENCE Magazine

Winners are CAD-related products and services that have done the most to raise the bar of excellence and technological innovation.

Pro/ENGINEER Wildfire

Innovator of the Year

CAD CAM Magazine

The leading engineering and design magazine of Central Europe.



PTC Worldwide Headquarters | 140 Kendrick Street | Needham | Massachusetts 02494 | +1 888.782.3776

Copyright © 2006, Parametric Technology Corporation (PTC) — All rights reserved under copyright laws of the United States and other countries. PTC, the PTC Logo, ProductView, Pro/ENGINEER, Wildfire, ModelCHECK, Pro/CONCEPT, GRANITE, Windchill, Windchill PartsLink, Windchill PDMLink, Windchill ProjectLink and all PTC product names and logos are trademarks or registered trademarks of PTC and/or its subsidiaries in the United States and in other countries. Windows is a registered trademark of Microsoft Corporation.

1 4 1 9 - T O P T E N 0 6 - E N